

SAVE THE DATE



Embrace Pinellas

Annual Instructional Personnel Orientation

Summer 2014

Welcome to Pinellas County Schools where we strive for 100% student success. This four day orientation experience will help you embrace our districts' policies and procedures as well as equip you with beginning strategies and resources to tackle your first couple of weeks in your new role. Do not miss out on this beneficial opportunity!

Please email Kristen Esposito (espositok@pcsb.org) to register for the event and/or for more details.

When:

Monday, July 28 – Thursday, July 31
Registration 8:00- 8:30am
Learning 8:30 – 3:30pm daily

Where:

Countryside High School
3000 State Road 580
Clearwater, FL 33761
(727) 725-7956

PLEASE MARK YOUR CALENDARS!



Professional Development Department

"Inspiring Excellence in Practice to Ensure Student Success"

(727) 588-6224

When:
Summer 2014
Monday, July 28
To
Thursday, July 31



Embrace Pinellas: An Onboard Experience

Annual Instructional Personnel Orientation
&
Professional Learning Series



GOAL: Guide and support teachers new to Pinellas in embracing district policies and reinforcing beginning strategies to tackle the first weeks in their new roles.

Event Highlights Include:

- 24 Total Hours of Learning (8:30am – 3:30pm)
- Opening & Closing Ceremony
- Optional Meet and Greet Mixer
- Optional School Visit on Day 4

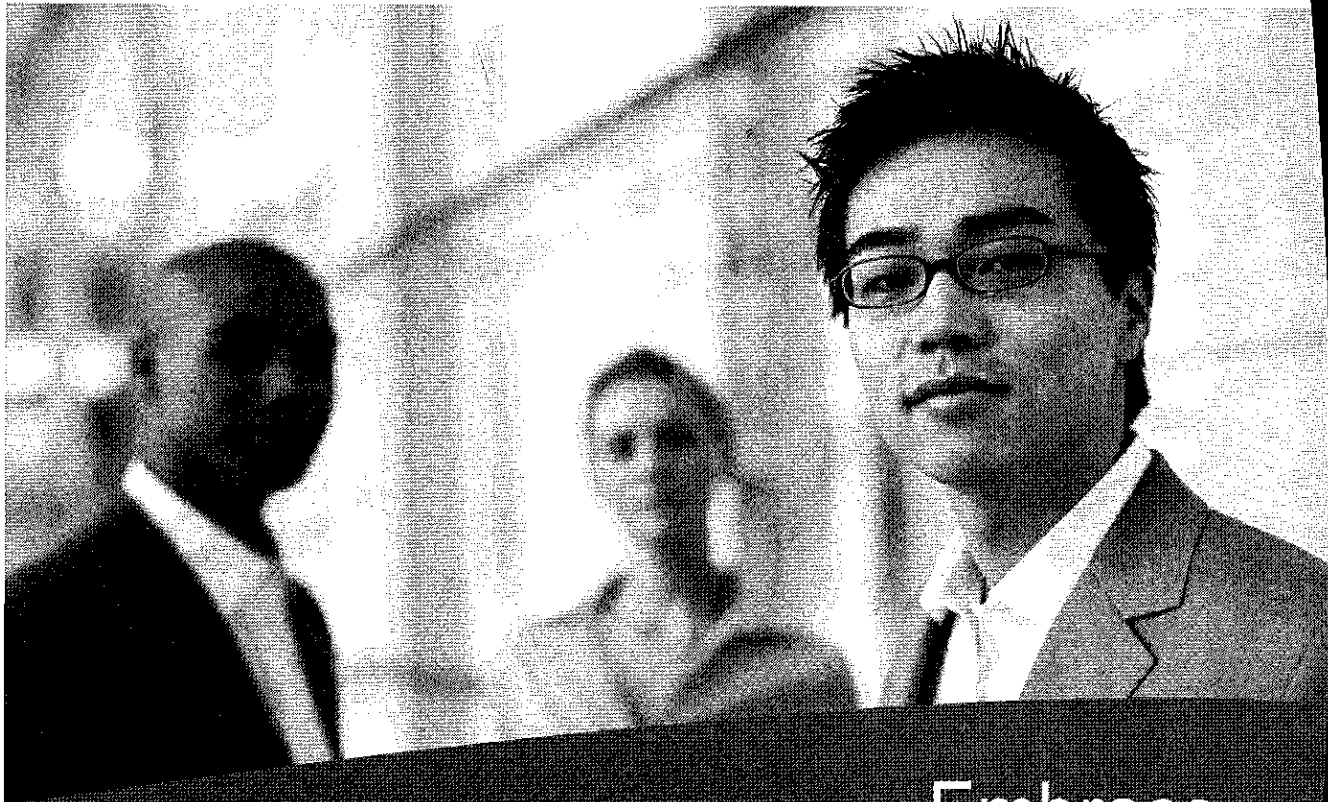
Required Professional Learning Includes:

- (6) Required hours of Maintaining a Student-Centered Learning Environment
- (6 or more) Required hours of Content-Area Specific Learning

Optional Elective

- Technology Integration Systems
- Homeless Education
- Benefits
- Student Services
- AVID Strategies
- Wellness Overview
- ESE Overview
- Library/Media
- ... and much more

Please email Kristen Esposito (espositok@pcsb.org) to register for the event and/or for more details.



Embrace Pinellas

New
Instructional
Hire
Orientation /
Professional
Development
Experience

2014

Embrace Conference Agenda

Monday, July 28, 2014

8:00AM - 8:25AM	Registration
8:30AM - 9:20AM	Opening Session (Auditorium)
9:30AM - 12:20PM	0-3 YRS. Experience/ ESE Student Engagement Sessions
9:30AM - 10:20AM	AM Elective Sessions
10:30AM - 11:20AM	AM Elective Sessions
11:25AM - 12:25PM	1 st LUNCH
12:25PM - 1:25PM	2 nd LUNCH
12:30PM - 3:30PM	4+ YRS. Experience Student Engagement Sessions
1:30PM - 2:20PM	PM Electives
1:30PM - 3:30PM	ESOL in the Elementary Classroom
2:30PM - 3:30PM	PM Electives

Tuesday, July 29, 2014

8:30AM - 11:20AM	0-3 YRS. Experience/ ESE Student Engagement Sessions
8:30AM - 9:20AM	AM Elective Sessions
9:30AM - 10:20AM	AM Elective Sessions
10:30AM - 11:20AM	AM Elective Sessions
11:25AM - 12:25PM	LUNCH
12:30PM- 3:30PM	4+ YRS. Experience Student Engagement Sessions
12:30PM-1:20PM	PM Electives
1:30PM - 2:20PM	PM Electives
1:30PM - 3:30PM	ESOL Compliance
2:30PM - 3:30PM	PM Electives

Wednesday, July 30, 2014

8:30AM - 11:20AM	AM Content Area Sessions
8:30AM - 9:20AM	AM Elective Sessions
9:30AM - 10:20AM	AM Elective Sessions
10:30AM - 11:20AM	AM Elective Sessions
11:25AM - 12:25PM	LUNCH
12:30PM- 3:30PM	PM Content Area Sessions
12:30PM-1:20PM	PM Electives
12:30PM - 2:20PM	ESOL in the Secondary Classroom; ESE Compliance
1:30PM - 2:20PM	PM Electives
2:30PM - 3:30PM	PM Electives
3:30PM - 5:00PM	Meet and Greet Event

Thursday, July 31, 2014

8:30AM - 11:20AM	AM Content Area Sessions
11:30AM - 12:20PM	Closing Session (Auditorium)
12:30PM-1:25PM	LUNCH
1:30PM- 3:30PM	School Site Visits

Student Engagement Sessions

MONDAY, JULY 28
9:30AM – 12:20PM

TUESDAY, JULY 29
8:30AM – 12:20PM

0-3 YRS Classroom Strategies to Increase Student Engagement

Take a proactive approach to the beginning of the school year! These sessions will focus on the essential skills of effective teachers. Learn how to start the year off right using the Structure, Teach, Observe, Interact and Correct (STOIC) model from CHAMPS along with other resources. Participants will receive useful researched-based and practical strategies.

- Campbell Park, Sandy Lane, Maximo Elementary Teachers
- Bellaire, Melrose and Pinellas Park Elementary Teachers
- All Other Elementary Teachers
- Fairmount Park and Lakewood Elementary Teachers
- Dunedin and Ridgecrest Elementary Teachers
- Middle School Teachers
- High School Teachers

Student Engagement Sessions

4 or More YRS Classroom Strategies to Increase Student Engagement

Refresh/Fine-tune your classroom engagement strategies for the beginning of a new school year!

A new school year is the perfect time to reflect and refine your classroom engagement strategies. These sessions provide veteran teachers with collaborative activities framed around the Structure, Teach, Observe, Interact and Correct (STOIC) model from CHAMPS along with other resources.

- Campbell Park, Sandy Lane, Maximo Elementary Teachers
- Bellaire, Melrose and Pinellas Park Elementary Teachers
- All Other Elementary Teachers
- Fairmount Park and Lakewood Elementary Teachers
- Dunedin and Ridgecrest Elementary Teachers
- Middle School Teachers
- High School Teachers

ESE Elementary School Teachers IVE, SVE & ASD)

Classroom strategies and Programming for special diploma teachers of students with autism and intellectual disabilities served in our elementary IVE, SVE, and ASD programs. We will explore the essential elements and quality indicators of these programs.

Teachers of ASD, IVE, SVE and MMI

Classroom strategies and Programming for special diploma teachers of students with autism and intellectual disabilities served in our middle and high school Mild-Moderate and Intensive programs (MMI). We will explore the essential elements and quality indicators of these programs

Teachers of Standard Diploma EBD and ASD Secondary Standard Diploma

Teachers of students with an emotional and/or behavioral disability served in our elementary, middle and high school EBD Programs. We will explore the essential elements and quality indicators of these programs as well as the district level and point system.

PreK Teachers-

Strategies to start the school year off right.

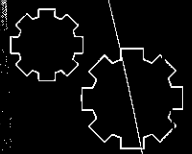
MONDAY, JULY 28
12:30PM – 3:30PM

TUESDAY, JULY 29
12:30PM – 3:30PM

ESE STUDENT ENGAGEMENT SESSIONS

MONDAY, JULY 28
9:30AM – 11:20AM

TUESDAY, JULY 29
8:30AM – 11:20AM



Pinellas County Schools Facts

Located on Florida's beautiful Gulf Coast, we are the seventh largest district in the state and the largest employer in Pinellas County. One of our many strengths is the diversity of our nearly 116,305 pre-kindergarten through adult education students and the more than 60 choice programs that serve them.



MONDAY, JULY 28

Elective Sessions

Disable the Label: ESE and 504 Services and Supports for Students with Disabilities

9:30- 10:20am; 10:30 - 11:20am; 1:30-2:20pm; 2:30-3:30pm

This session will provide teachers with:

- An awareness of the variety of student's disabilities that they may experience within their classrooms
- Description of the continuum of supports available to students with disabilities in Pinellas County Schools.
- Suggested resources and web links
- Contact information for resources within Pinellas County Schools

The Power of Connecting with Parents...Parent Engagement is NOT

Overrated 9:30- 10:20am; 10:30 - 11:20am; 1:30-2:20pm; 2:30-3:30pm

Upon completion of this training, you will be introduced to:

- Benefits of establishing a relationship with your student's parents
- Working with parents - "Perceptions vs. Reality"
- Barriers for parental involvement
- Different types of parents that you will encounter
- "Tried and true" methods for communicating with each parent type
- Tools to effectively communicate with each parent type
- Tools to effectively communicate with angry, hostile, non-communicative parents
- Effective Parent Teacher Conferences



Transition To Teaching Professional Develop. Certification Program (TTT) 9:30-10:20am; 2:30 - 3:30pm

This session will provide you the information you need to complete your state or vocational certification requirements. Our TTT district program is an affordable and practical alternative to going back to college. Middle and High School, Adult Education, and Vocational Educators are all eligible.

AXA Financial Overview/Understanding your FRS options 10:30- 11:20am; 1:30 - 2:20pm

Making a selection on your pension when you begin your career with PCSB can be daunting. Please join us for an overview of your options and a Q&A session afterwards.

How to Achieve Financial Success – Credit, Budgeting and Saving 9:30- 10:20am; 2:30-3:30pm

Why is it important to understand credit? • The importance of a budget and keeping track of your money. • Why is it important to save money? • Where can I get financial counseling and support?

MONDAY, JULY 28 and TUESDAY, JULY 29

Online District Orientation: District Services

(MON) 9:30- 10:20am; 10:30 - 11:20am; 1:30-2:20pm; 2:30-3:30pm

(TUES) 8:30 - 9:20am; 9:30am - 10:20am; 10:30 - 11:20am; 12:30 - 1:20pm; 1:30 - 2:20pm; 2:30 - 3:30pm

Who is who in Pinellas County School's district office and how can they help you? This session is a self-paced look at different department offices and services for new instructional hires.

Pinellas County Teachers Association

Instructional Frameworks (MON) 9:30 - 10:20am; 10:30 - 11:20am; 1:30-2:20pm; 2:30-3:30pm (TUES) Same as MON.

This session introduces teachers to Pinellas County's adopted instructional frameworks.

TUESDAY, JULY 29

Why Race and Culture Matter in Our Schools (Elementary Teachers) 8:30- 9:20am; 12:30 - 1:20pm; 2:30-3:30pm

Why Race and Culture Matter in Our Schools (Secondary Teachers) 9:30- 10:20am; 10:30 - 11:20am; 1:30-2:20pm

Have you been hired at a Title 1 school with a diverse population of learners? Are you interested in examining why the race, culture, and socio-economic status of your students matter? Join us for a quick overview of what it takes to become a more culturally responsive teacher in today's high-needs schools.

What in the world is WICOR? 9:30- 10:20am; 10:30 - 11:20am; 12:30-1:20pm; 1:30-2:20pm

This strand demonstrates how college readiness can be supported in all subject areas. Participants will learn about AVID methodologies and WICOR strategies such as goal-setting, focused note-taking, organization, and time management. This strand will focus on incorporating these college readiness skills into all classes.

Elective Sessions

TUESDAY, JULY 29

What Have You Done For Me Lately?: How Student Services Can Support Your Work in Your Classroom

8:30-9:20am; 9:30-10:20am; 1:30-2:20pm; 2:30-3:30pm

Learn how student services can provide you and your students with support that will increase the academic and social/emotional learning in your classroom. A team of student services staff including counselors, social workers, psychologists, nurses and prevention specialists will provide an overview of what is available and how you can access these services.

Embrace Homeless Education

8:30-9:30am, 9:30-10:20am, 10:30-11:20am, 12:30-1:20pm; 1:30-2:20pm, 2:30-3:30pm

This course is designed to raise awareness and increase teachers' knowledge level regarding the issue of homelessness, the legal rights and specific educational needs of students experiencing homelessness, and to raise sensitivity to the trauma and emotional needs of students experiencing homelessness. The overarching purpose is to create a culture of understanding in order to remove the barriers to the free and appropriate education of students in homeless situations.

Disability Awareness 8:30-9:20am, 10:30-11:20am, 12:30-1:20pm; 2:30-3:30pm

Overview of characteristics of students with autism, emotional/behavioral disabilities, intellectually disabilities as well as other health impairments. We will also discuss strategies for supporting students with disabilities. Classroom roles of the teacher and the assistant, what are accommodations versus modifications and why they are important to delivering instruction and/or support will be discussed.



Wednesday, July 30

Beneflex 2014; Understanding your Benefit Plans & Insurance Options

8:30-9:30am, 9:30-10:20am, 10:30-11:20am, 12:30-1:20pm; 1:30-2:20pm, 2:30-3:30pm

This presentation will provide you details about the benefits program, including eligibility, plan features and provisions and their associated costs—everything you need to know to make informed choices for you and your family for today and your future.

Working Wellness into Your Day

8:30-9:20am, 10:30-11:20am, 1:30-2:20pm, 2:30-3:30pm

Overwhelmed by the thought of getting healthy? Forget the numbers, measurements and tracking. Learn easy, doable ways to add wellness into your day, every day. PCS-specific programs as well as general wellness practices will be highlighted.

Overview of the Florida Diagnostic & Learning Resources System (FDLRS)

8:30-9:20am, 10:30-11:20am, 1:30-2:20pm, 2:30-3:30pm

Come learn about all four functions of this free district resources center including: Child Find, Human Resource Development, Technology, and Parent Services.

One Team, One Mission 9:30-10:20am, 10:30-11:20am, 12:30-1:20pm, 1:30-2:20pm

Learn Practical Strategies for Teaching the Hard-to-Reach Student: how to construct and implement instructional strategies to improve grades, attendance, and behavior. Cultural Objective: increase positive emotional safety for struggling students.

New Employees to the Pinellas County Schools.....Technology you need to know about.....

8:30-9:20am, 9:30-10:20am, 10:30-11:20am, 12:30-1:20pm; 1:30-2:20pm, 2:30-3:30pm

Participants will learn about: PCS Domain Accounts, employees responsibility and account security, how the district supports our technology through the PCS Tech Help and the Services we provide for you. We will discuss the standard equipment issued to all PCS employees, our PCS email system, PCS student management system (Focus), PCS learning resources for students and staff such as eLearning Moodle and Collaborate will all be outlined.

Making your message matter: Tips and tools for clear and concise communication

8:30-9:30am, 9:30-10:20am, 10:30-11:20am, 12:30-1:20pm, 1:30-2:20pm, 2:30-3:30pm

This session will give teachers tips and tools to help them communicate effectively. Session includes the following topics: the roles and responsibilities of the Office of Strategic Communication; an introduction to the District's Communication Guide; communication vehicles available to employees; how to use media relations, school marketing efforts and social media to share the good news about your students and school; and communications issues that affect PCS employees, including public records requests, media release forms, use of electronic devices to communicate with students and families, controversial materials, and copyright info.

How to Find and Use your District Library Media Teacher Resources 8:30-9:20am, 9:30-10:20am, 1:30-2:20pm

In this session, current media specialists will demonstrate how to find the district library media resources housed on the PSCB website. They will demonstrate how to utilize and log into each link on the site. They will also offer suggestions on best practices to use with these resources to raise student awareness and achievement. Teachers will come away with a handout that shows links and login information.

Content-Area Sessions

WEDNESDAY, JULY 30

8:30 – 11:20AM

THURSDAY, JULY 31

8:30-11:20AM

K-12 Performing Arts

These two-day three-hour sessions introduce Performing Arts teachers to district curricula and available resources. Participants will meet in a general room and split up based on instructional specialty area.

Career Technical Education

Differentiated session for CTE teachers

6-8 English Language Arts

6-8 grade E/LA teachers (including Reading and Language Arts teachers will spend time reviewing the curriculum/pacing guide, essential learnings, CCSS consolidated standards and develop a Common Core Lesson plan for the first few weeks of school. Additionally, participants will learn how to tie instructional rubric/criteria to lesson plans as well as strategies for incorporating formative and summative assessments into daily plans.

9-12 ELA

9-12 grade E/LA teachers (including Reading and Language Arts teachers will spend time reviewing the curriculum/pacing guide, essential learnings, CCSS consolidated standards and develop a Common Core Lesson plan for the first few weeks of school. Additionally, participants will learn how to tie instructional rubric/criteria to lesson plans as well as strategies for incorporating formative and summative assessments into daily plans.

ESE-Special Diploma for IVE, SVE, ASD, MMI (Elementary and Secondary)

Core Curriculum for special diploma programs. We will explore Cpalms, ACCESS Points as well as core and supplementary special diploma curriculum.

ESE-PreK

Strategies to start the school year off right

1st Grade Elementary Education

2nd Grade Elementary Education

In these sessions, teachers will be introduced to the Math, Science Health curriculum guides on day 1 and ELA/Social Studies curriculum guides on day 2



Specialized Content-Area Sessions

ESE Compliance

WEDNESDAY, JULY 30 12:30 – 2:20PM

Learn about federal, state and district ESE procedures, guidelines, policies, and documentation related to ESE students and services provided.

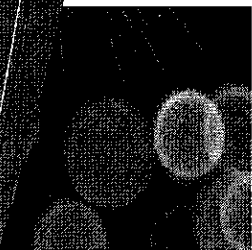
ESOL Compliance TUESDAY, JULY 29 1:30 - 3:30PM

Learn about the federal, state and district ESOL procedures, guidelines, policies, and documentation related to identification, placement, extension of services, exit, monitoring, reclassification, ELL Committee, etc. Learn about the state and district ELL assessments; how to adequately interpret and utilize relevant ELL individual assessment data to plan instruction that will meet ELLs cultural and linguistic needs, improve language acquisition, and ELL student achievement.

ESOL Elementary Classroom MONDAY, JULY 28 1:30 - 3:30PM

ESOL Secondary Classroom WEDNESDAY, JULY 30 12:30 – 2:20PM

Learn how to plan for effective instruction that meets the needs of language minority students. Learn how to collaborate with classroom teachers using technology, tools, data, and resources to ensure comprehensible instruction to ELL students.



Content-Area Sessions

World Languages K-12

Embrace world languages in Pinellas and discover the keys to successful language teaching. Collaborate with colleagues to

investigate standards and plan lessons and assessments based on authentic contexts. Participate in activities that utilize research-based strategies designed to cognitively engage students and foster positive classroom relationships. Discover a collection of tools and resources to support your teaching and professional growth. Embrace language teaching in Pinellas!

WEDNESDAY, JULY 30 THURSDAY, JULY 31

12:30 – 3:30PM

8:30-11:20AM

K-12 Art

Over the course of day 1 and day 2 of these sessions, K-12 Art teachers will gain a knowledge of the NGSSS and Visual Arts course descriptions/standards, PCSB key learnings, Visual Arts Curriculum Maps, Formative and Summative Assessments, Countywide Visual Arts Exhibitions and Assessments, Assessment Rubrics, how to manage art supply budgets and how technology is used for Visual Arts in Pinellas County Schools.

K-12 Physical Education

These two-day three-hour sessions introduce Physical Education teachers to district curriculum and available resources. Participants will learn how to unpack standards and plan for effective instruction for large class sizes.

6-12 Health

The secondary Health Education session will provide an overview of the Health Education Standards, skills and concepts, requirements and resources to effectively teach health education. With guidance, attendees will develop appropriate lessons for the first two weeks of each health class they will teach.

6-8 Math

Participants will engage in an in depth review of the Pinellas County School's Middle School Mathematics Curriculum Guide. Participants will learn how to read, maneuver, interpret, and implement the mathematics curriculum components and resources. Participants will engage in discussions and activities focused on Building Community in the Mathematics Classroom.

9-12 Math

In this session participants will become comfortable using the curriculum guides to create appropriate lessons for students. As well as get a feel for how to create a student-centered classroom, which allows student data to drive instruction.

6-8 Science

Middle School Science teachers will have the opportunity to take a fresh look at the 5E learning cycle. This session will allow participants to experience the 5E's by discussing current practices while observing a teacher take her students through a complete cycle. Participants will be given a chance to develop a purpose for each phase so they can adapt their current practice into the model. They will also be taught how to unpack benchmarks and be given time to plan and develop a learning cycle for an upcoming concept.

9-12 Science

Content –area curriculum overview

6-12 Social Studies

Social Studies teachers will be introduced to: (1) an overview of the department and the resources readily available, (2) intentional planning strategies that begin with a hook and a grabber, (3) available textbooks, curriculum guides and (3) engagement strategies. Furthermore, Social Studies teachers will examine CCSS literacy standards, Discussion-Based Questioning techniques, curriculum benchmarks and how it all looks in the classroom.

3rd Grade Elementary Education

4th Grade Elementary Education

5th Grade Elementary Education

In these sessions, teachers will be introduced to the Math, Science Health curriculum guides on day 1 and ELA/Social Studies Curriculum guides on day 2.

Session Room Assignments

July 28, 2014	July 29, 2014	July 30, 2014	July 31, 2014
MONDAY	TUESDAY	WEDNESDAY	THURSDAY
8:30-9:20	8:30-11:20	8:30-11:20	8:30-11:20
OPENING CEREMONY			
Classroom Strategies to Increase Student Engagement (0-3 years' experience)	Classroom Strategies to Increase Student Engagement (0-3 years' experience)		
Room D-D	Room D-D	Room B-9	Room C-6
Campbell Park, Sandy Lane, Maximo	Campbell Park, Sandy Lane, Maximo	English/Language Arts for MS Teachers	Social Studies for Secondary Teachers
Room B-7	Room B-7	Room C-1	Room B-9
Bellaire, Melrose and Pinellas Park	Bellaire, Melrose and Pinellas Park	English/Language Arts for HS Teachers	English/Language Arts for MS Teachers
Room C-2	Room C-2	Room C-2	Room C-1
Fairmount Park and Lakewood Elementary	Fairmount Park and Lakewood Elementary	1 st Grade Teachers (Science/Math Content)	English/Language Arts for HS Teachers
Room B-8	Room B-8	Room C-4	Room C-2
Dunedin and Ridgcrest	Fairmount Park and Lakewood Elementary	2 nd Grade Teachers (Science/Math Content)	1 st Grade Teachers (Reading/LA/SS content)
Room C-1	Room C-1	Choral Room (902)	Room C-4
For all other Elementary Teachers	Dunedin and Ridgcrest	Performing Arts for K-12 teachers	2 nd Grade Teachers (Reading/LA/SS content)
Room D-5	Room C-1	Room M-1	Choral Room (902)
Middle School Teachers only	For all other Elementary Teachers	ESE/IVE, SVE, ASD, MMI Special Diploma	Performing Arts for K-12 teachers
Room D-7	Room D-5	Room L-1	Room M-1
High School Teachers only	Middle School Teachers only	ESE Pre-K Teachers	ESE / IVE, SVE, ASD, MMI Special Diploma
Room M-8	Room D-7	Room A-7	Room L-1
ESE Teachers: IVE, SVE, MMI, & ASD	High School Teachers only	Career And Technical Education Teachers	ESE Pre-K Teachers
Room M-1	Room M-8		Room B-6
ESE Teachers: ASD/EBD Standard Diploma	ESE Teachers: IVE, SVE, MMI, & ASD		Math Education for MS Teachers
Room L-1	Room M-1		Room B-7
Pre-K Teachers	ESE Teachers: ASD/EBD Standard Diploma		Math Education for HS Teachers
	Room L-1		Room D-5
	Pre-K Teachers		Science Education for MS Teachers
		8:30-9:30	
	Room K-9	Room M-9	Room D-7
	Why Race and Culture Matter for Elem Teachers	Working Wellness into Your Day	Science Education for HS Teachers
	Room C-6	Room K-9	Room A-7
	What Have You Done For Me Lately?	Beneflex 2014	Career And Technical Education Teachers
	Room N-10	Media Center	Room K-6
	Embrace Homeless Education	New Employees to PCS: Technology ...	World Languages for K-12 Teachers
	Room A-8 and B-2	Room K-10	Room M-6
	Online District Orientation	Making your Message Matter: Tips & Tools	Art Teachers, K-12
	Room D-1	Room L-5	Room K-7
	Pinellas County Teachers Association	How to Find/Use your District Media Resources	Physical Education Teachers for K-12 Teachers
	Room K-7	Room M-8	Room A-5A
	Disability Awareness	FDLRS Overview	Health Education for Secondary Teachers

Session Room Assignments

July 28, 2014		July 29, 2014		July 30, 2014		July 31, 2014	
9:30-10:20		9:30-10:20		9:30-10:20		8:30-11:20	
Room K-7	Disable the Label	Room K-9	Why Race and Culture Matter for 2ndary Tchrs	Room L-8	"One Team, One Mission"	Room D-D	3rd Grade Teachers (Reading/LA/SS content)
Room K-6	Instructional Frameworks	Room L-5	What in the world is WICOR?	Room K-9	Beneflex 2014	Room D-1	4th Grade Teachers (Reading/LA/SS content)
Room K-9	Transition To Teaching PD Certification	Room C-6	What Have You Done For Me Lately?	Media Center	New Employees to PCS: Technology ...	Room B-8	5th Grade Teachers (Reading/LA/SS content)
Room A-8 and B-2	Online District Orientation	Room N-10	Embrace Homeless Education	Room K-10	Making your Message Matter: Tips & Tools		
Room N-10	The Power of Connecting w/Parents	Room D-1	Pinellas County Teachers Association	Room L-5	How to Find/Use your District Media Resources		
Room K-10	How to Achieve Financial Success	Room K-6	Instructional Frameworks				
		Room A-8 and B-2	Online District Orientation				
10:30-11:20		10:30-11:20		10:30-11:20			
Room K-7	Disable the Label	Room L-5	What in the world is WICOR?	Room M-9	Working Wellness into Your Day		
Room K-6	Instructional Frameworks	Room N-10	Embrace Homeless Education	Room L-8	"One Team, One Mission"		
Room N-10	The Power of Connecting w/Parents	Room K-9	Why Race and Culture Matter for 2ndary Tchrs	Room K-9	Beneflex 2014		
Room K-10	AXA Financial Overview/Understand FRS option	Room A-8 and B-2	Online District Orientation	Room M-8	FDLRS Overview		
Room A-8 and B-2	Online District Orientation	Room K-6	Instructional Frameworks	Media Center	New Employees to PCS: Technology ...		
		Room K-7	Disability Awareness	Room K-10	Making your Message Matter: Tips & Tools		
11:30-12:30 or 12:30-1:30 LUNCH		11:30-12:30 LUNCH		11:30-12:30 LUNCH		11:30-12:30	
12:30-3:30		12:30-3:30		12:30-3:30		CLOSING GENERAL SESSION	
Classroom Strategies to Increase Student Engagement (4+ years' experience)		Classroom Strategies to Increase Student Engagement (4+ years' experience)		Room D-D		3rd Grade Teachers (Science/Math content)	
Room D-D	Campbell Park, Sandy Lane, Maximo	Room D-D	Campbell Park, Sandy Lane, Maximo	Room D-1	4th Grade Teachers (Science/Math content)	1:30-3:30	
Room B-7	Bellaire, Melrose and Pinellas Park	Room B-7	Bellaire, Melrose and Pinellas Park	Room B-8	5th Grade Teachers (Science/Math content)	SCHOOL SITE VISIT	
Room C-2	Fairmount Park and Lakewood Elementary	Room C-2	Fairmount Park and Lakewood Elementary	Room A-5A	Health Education for Secondary Teachers		
Room B-8	Dunedin and Ridgcrest	Room B-8	Dunedin and Ridgcrest	Room K-6	World Languages for K-12 Teachers		
Room C-1	For all other Elementary Teachers	Room C-1	For all other Elementary Teachers	Room M-6	Art Teachers, K-12		
Room D-5	Middle School Teachers only	Room D-5	Middle School Teachers only	Room K-7	Physical Education Teachers for K-12 Teachers		
Room D-7	High School Teachers only	Room D-7	High School Teachers only	Room C-6	Social Studies for Secondary Teachers		

Session Room Assignments

July 28, 2014	July 29, 2014	July 30, 2014	July 31, 2014
		Room B-6 Math Education for MS Teachers	
		Room B-7 Math Education for HS Teachers	
		Room D-7 Science Education for MS and HS Teachers	
	12:30-1:20	12:30-2:20	
	Room L-5 What in the world is WICOR?	Room N-11 ESOL in an Elementary Classroom	
	Room N-10 Embrace Homeless Education	Room N-10 ESE Compliance	
	Room K-9 Why Race and Culture Matter for Elem Teachers	12:30-1:20	
	Room D-1 Pinellas County Teachers Association	Room K-10 Making your Message Matter: Tips & Tools	
	Room K-7 Disability Awareness	Room K-9 Beneflex 2014	
	Room A-8 and B-2 Online District Orientation	Media Center New Employees to PCS: Technology ...	
1:30-3:30	1:30-3:30	Room L-8 "One Team, One Mission"	
Room N-11 ESOL in an Elementary Classroom	Room N-11 ESOL Compliance for K-12 ESOL Teachers		
1:30-2:20	1:30-2:20	1:30-2:20	
Room K-7 Disable the Label	Room L-5 What in the world is WICOR?	Room L-8 "One Team, One Mission"	
Room K-6 Instructional Frameworks	Room N-10 Embrace Homeless Education	Room K-9 Beneflex 2014	
Room N-10 The Power of Connecting w/Parents	Room C-6 What Have You Done For Me Lately?	Room M-8 FDLRS Overview	
Room K-10 AXA Financial Overview/Understand FRS option	Room K-9 Why Race and Culture Matter for 2ndary Tchrs	Media Center New Employees to PCS: Technology ...	
Room A-8 and B-2 Online District Orientation	Room A-8 and B-2 Online District Orientation	Room K-10 Making your Message Matter: Tips & Tools	
	Room K-6 Instructional Frameworks	Room L-5 How to Find/Use your District Media Resources	
		Room M-9 Working Wellness into Your Day	

Session Room Assignments

July 28, 2014 2:30-3:30	July 29, 2014 2:30-3:30	July 30, 2014 2:30-3:30	July 31, 2014
Room K-7 Disable the Label	Room N-10 Embrace Homeless Education	Room K-9 Beneflex 2014	
Room K-6 Instructional Frameworks	Room C-6 What Have You Done For Me Lately?	Room M-8 FDLRS Overview	
Room N-10 The Power of Connecting w/Parents	Room K-9 Why Race and Culture Matter for Elem Teachers	Media Center New Employees to PCS: Technology ...	
Room A-8 and B-2 Online District Orientation	Room A-8 and B-2 Online District Orientation	Room K-10 Making your Message Matter: Tips & Tools	
		Room M-9 Working Wellness into Your Day	
Room K-9 Transition To Teaching PD Certification	Room D-1 Pinellas County Teachers Association	3:30-5:00	
Room K-10 How to Achieve Financial Success	Room K-6 Instructional Frameworks	Meet and Greet Mixer Countryside High School Cantourse	
	Room K-7 Disability Awareness		

“Inspiring Excellence in Practice to Ensure Student Success”

**The School Board of Pinellas
County, Florida**

Carol J. Cook, Chairperson
Linda S. Lerner, Vice Chairperson

Janet R. Clark

Rene Flowers

Terry Krassner

Peggy L. O'Shea

Robin L. Wikle

**Michael A Grego, Ed.D
Superintendent of Schools**



**PINELLAS
COUNTY
SCHOOLS**